



**Class I, Division 1**  
**Groups C,D,T5/T6**  
**Class I, Division 2**  
**Groups A,B,C,D,T4A/T5**  
**Ex II 2G Ex db IIC T6 Gb**

Applicable to  
**55°C**  
Environment

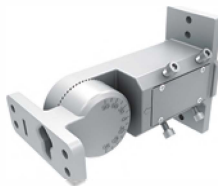


- Mounting bracket optional.
- Wire guard-prevent the glass from being broken.
- Lens different optional.
- Wire cavity,helps to isolate the operator and the driver so as to make wiring safer.
- Separated lamp body and driver makes higher heat resistance and better heat dissipation.

## Accessories



**AM-Adjustable slip fitter mounting bracket**



**A&D-Universal bracket**



**DM-Direct mounting bracket**



**RAM-Round Adjustable mounting bracket**



**Cable Mount**



**FM-Shape Buckle**



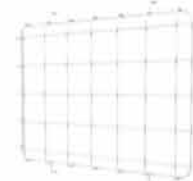
**FM-Shape Buckle**



**CM-Side Surface Mount**



**Shield**



**WG-Wire Guard**

# Hazardous Location LED Flood Light



## Application

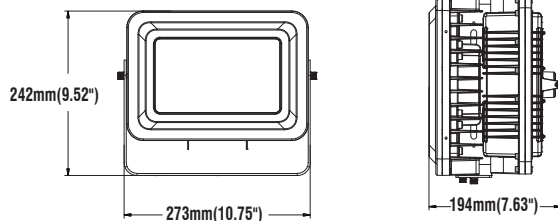
Warehouse, factory and workshops; Petroleum and petrochemical area, and gas station; Power, railway, ship port, public security, fire protection and other fields.

## Specifications

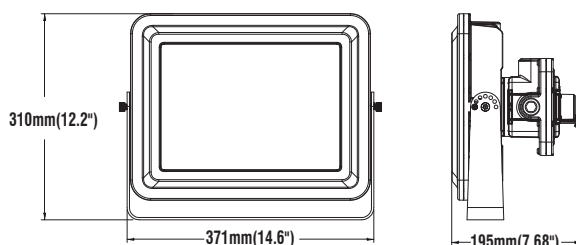
Input Wattage	30W	60W	100W	150W	200W	150W
Voltage	120-240VAC, 120-277VAC, 50/60Hz					277-480VAC, 50/60Hz
Lumen Output	3600-4500lm	6600-9000lm	11000-15000lm	16500-22500lm	22000-30000lm	16500-22500lm
Efficacy	120-150lm/w	110-150lm/w	110-150lm/w	110-150lm/w	110-150lm/w	110-150lm/w
Color Rendering Index	>70					
Color Temperature	3000K, 4000K, 5000K, 5700K, 6500K					
Lens	Clear Glass or Clear Striped Spherical Glass					
Beam Angle	15 Degree, 30-90 Degree, 110 Degree, T1-T5, 7H6V (140*120 Degree)					
PF	>0.9					
THD	≤20%					
Housing Color	Yellow, Grey					
Operating Temperature	-40°C TO 55°C (-40°F TO 131°F)					
Weight	3.8KG	8.5KG	13.8KG	13.8KG	13.8KG	13.8KG

## Dimensions

30W,60W



100W,150W,200W



## Installation Diagram

