

NAME: Hazardous Location LED Flood Light

P/N: AL-EPLF01-30WXYZD1-abcd

Note:

- 1、Where "**X**" stands for LED manufactory, can be J;
- 2、Where "**Y**" stands for Diffuser type, can be "S2" to "S10", can be "T1" to "T5"; can be "5H5V" to "7H7V"; represents different Diffuser light angle and with flat clear glass, or "CG" represents flat clear glass only;
- 3、Where "**Z**" can be "S" or blank, represents "with Wire Guard" or "without Wire Guard", can be "L" or blank, represents "Light shield";
- 4、Where "**a**" can be any two letters to represent color of luminaire;
- 5、Where "**b**" can be "FM", "U", "PM", "AM", "DM", "A&D", "RAM", "PM", "HM", represent bracket type";
- 6、Where "**c**" can be "NPT" for 3/4" NPT threaded pipe wiring;
- 7、Where "**d**" can be 27, 30, 40, 50, 57, 65 to represent CCT.

Advantage:

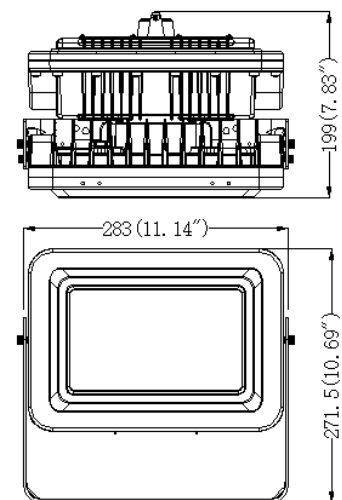
- Input voltage 120-277VAC.
- No UV or IR in the beam.
- Easy to install and operate.
- Energy saving, long lifespan.
- Light is soft and uniform, safe to eyes.
- Instant start, NO humming.
- Green and eco-friendly without mercury.

Application:

- Warehouse, factory and workshops;
- Petroleum and petrochemical area, and gas station;
- Power, railway, ship port, public security, fire protection and other fields.

CERTIFICATIONS:

- CI D1 Groups C,D.T6;
CI D2 Groups A,B,C,D.T5.
- UL 844.
- UL 1598.
- UL 1598A.
- UL 8750.
- CSA C22.2 No.137.0.
- CSA C22.2 No.250.0.
- CSA C22 2 No 250 13



Product Specifications

Product name	Hazardous Location LED Flood Light
Part No	AL-EPLF01-30WXYZD1-abcd
Dimension	283×271.5×199 mm 10.69" × 11.14" × 7.83"

Technical Characteristic

Color temperature	3000K - 6500K		
CRI	>70		
Cover	clear glass	clear glass +7H6V lens	clear glass + 23° lens
Lumen (Tolerance : ±10%)	4650 LM	4560 LM	4050 LM
Lumen Efficacy (Tolerance:±10%@5000K)	155 LM/W	152 LM/W	135LM/W
Viewing Angle	140° ×120° (7H6V);23° (S2);T1-T5;5H5V-7H7V;S3-S9;110°		
Input Power	30W		
Input Voltage	120-277VAC 50/60Hz		
Driver Brand	China Brand Driver (SS-50VP-56BH;L/N-PE: 10KV L-N: 6KV)		
PF	>0.9		
THD	≤20%		
Waterproof Rating	WET (IP66)		
Explosion-proof Mark	North America: Class I ,Division 1,Groups C,D, T6; Class I ,Division 2,Groups A,B,C,D, T5		

Materials

LED Brand/ LED Type	Bridgelux / SMD3030 (1W)
LED QTY	112 PCS
Housing	Aluminum Alloy
Housing color	Any Colors
Cover	Clear Glass

Others

Operating Temperature	-40℃ TO 60℃
Operating Humidity	10%-90% RH
Storage Temperature	-40℃ TO 80℃
Storage Humidity	10%-95% RH
Application	Indoor/Outdoor
Safety Certification	UL/cUL
Warranty Time	5 Years

Light Distribution Testing Parameters

(3000K,7H6V)

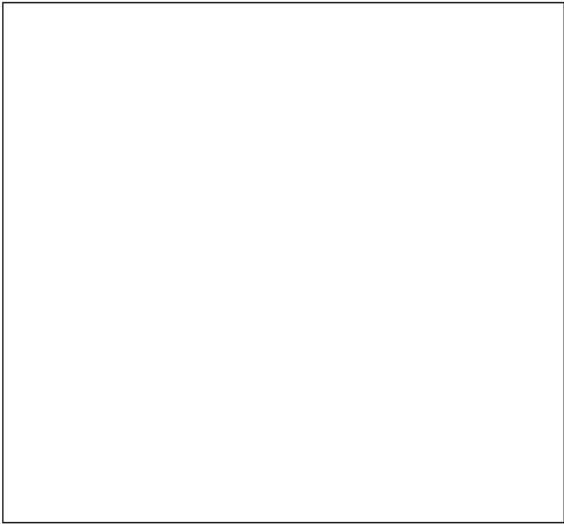
Luminaire Property

Luminaire Manufacturer:	Luminaire Description:
Luminaire Category:	Lamp Description:
Lamp Catalog:	Lumens per Lamp:
Number of Lamps:	Luminous Width (mm):
Luminous Length (mm):	Voltage: 120.0 V
Luminous Height (mm):	Power: 30.14 W
Current: 0.252 A	
Power Factor: 0.996	

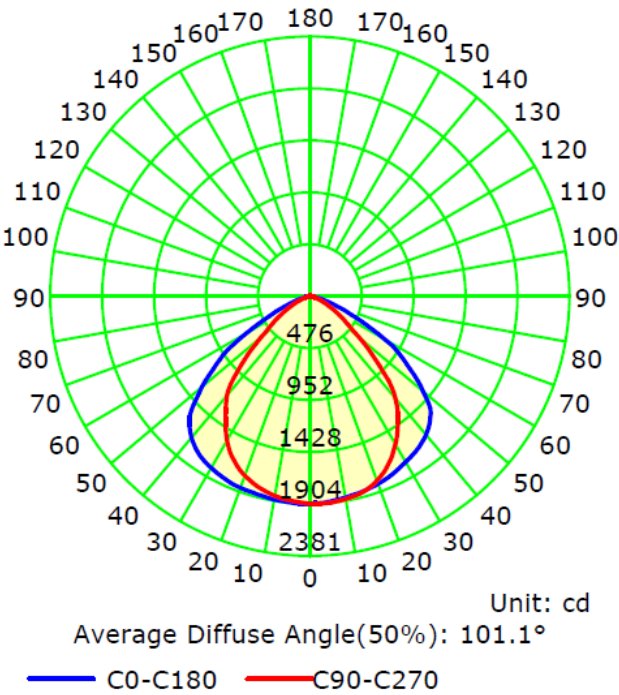
Photometric Results

IES Classification: Type I	Longitudinal Classification: Very Short
Total Rated Lamp Lumens: 4509.7 lm	Measurement Flux: 4509.7 lm
Efficiency: 100%	Downward Ratio: 100%
Upward Ratio: 0%	Luminaire Efficacy Rating (LER): 149.68
C0r0 Intensity: 1899.54 cd	Max. Intensity: 1904.99 cd
Pos of Max. Intensity: H157.5 V6	
Beam Angle(C0/C180,C90/C270,C45/C225,C135/315): 113.8, 88.4, 104.4, 104.3	

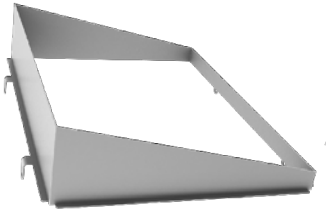
Picture Of Luminaire



Luminous Intensity Distribution Curve



Optional Accessory



Light shield



PM



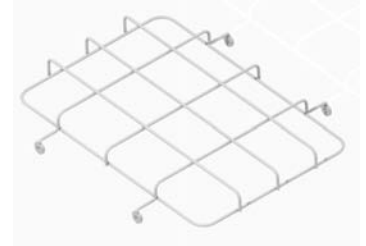
FM-shape buckle



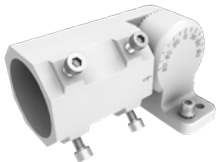
HM-Hchain mount



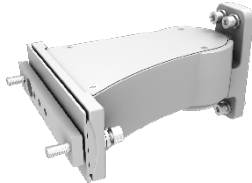
cable mount



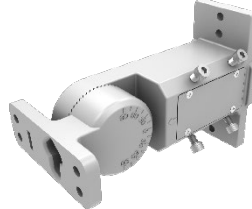
wire guard



AM



DM



A&D



RAM



CM

Package

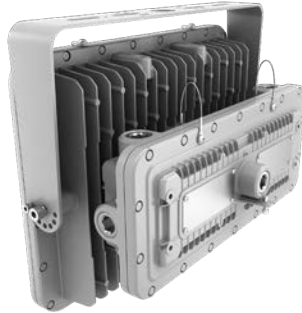
		clear glass (with U-shape bracket or FM bracket)	
Lamps Net Weight		9.1kg	
Outer box	size	365×345×255mm	
	Qty/ Carton	1 PC	
	Weight/Carton	10kg	

Notice For User

- ◆ when installing the conduit, remove the compression nut on the screw thread of the lamp. Requirement of waterproof for fixture connection and requirement of conduit system connection should according to the local regulations.
- ◆ Please turn off power before install or change assembly parts.
- ◆ The input voltage and lamps should be matched, after connecting the power line, Please make sure the wiring section is insulated.
- ◆ No-professionals, must not install and disassemble the lamps.

Trouble Shootings

Troubles	Check points
Flickering of the light	Turn off the power and turn on again in 3 minutes. If same phenomena occur, then call agencies.
Out of working	Please check the connection.



NAME: Hazardous Location LED Flood Light

P/N: AL-EPLF01-60WXYZD1-abcde

Note:

- Where "X" stands for LED manufactory, can be J;
- Where "Y" stands for Diffuser type, can be "S2" to "S10", can be "T1" to "T5"; can be "5H5V" to "7H7V"; represents different Diffuser light angle and with flat clear glass, or "CG" represents flat clear glass only;
- Where "Z" can be "S" or blank, represents "with Wire Guard" or "without Wire Guard", can be "L" or blank, represents "Light shield";
- Where "a" can be any two letters to represent color of luminaire;
- Where "b" can be "FM", "U", "PM", "AM", "DM", "A&D", "RAM", "PM", "HM", represent bracket type;
- Where "c" can be "NPT" for 3/4" NPT threaded pipe wiring;
- Where "d" can be 27, 30, 40, 50, 57, 65 to represent CCT, can be "T", stand for CCT adjustable;
- "e" can be "W" or blank for Power Control provided or not.

Advantage:

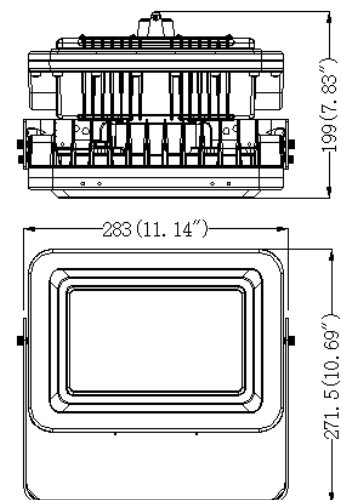
- Input voltage 120-277VAC.
- No UV or IR in the beam.
- Easy to install and operate.
- Energy saving, long lifespan.
- Light is soft and uniform, safe to eyes.
- Instant start, NO humming.
- Green and eco-friendly without mercury.

Application:

- Warehouse, factory and workshops;
- Petroleum and petrochemical area, and gas station;
- Power, railway, ship port, public security, fire protection and other fields.

CERTIFICATIONS:

- CI D1 Groups C,D.T6;
- CI D2 Groups A,B,C,D.T4.
- UL 844.
- UL 1598.
- UL 1598A.
- UL 8750.
- CSA C22.2 No.137.0.
- CSA C22.2 No.250.0.
- CSA C22 2 No 250 13



Product Specifications

Product name	Hazardous Location LED Flood Light
Part No	AL-EPLF01-60WXYZD1-abcde
Dimension	283×271.5×199 mm 10.69" × 11.14" × 7.83"

Technical Characteristic

Color temperature	3000K - 6500K ; CCT Adjustable (3000/4000/5000K)		
CRI	>70		
Cover	clear glass	clear glass +7H6V lens	clear glass + 23° lens
Lumen (Tolerance : ±10%)	9000 LM	9000 LM	7680 LM
Lumen Efficacy (Tolerance:±10%@5000K)	150 LM/W	150 LM/W	128LM/W
Viewing Angle	140° ×120° (7H6V);23° (S2);T1-T5;5H5V-7H7V;S3-S9;110°		
Input Power	60W (Wattage Adjustable: 30W/45W/60W)		
Input Voltage	120-277VAC 50/60Hz		
Driver Brand	China Brand Driver (SS-75VP-108BH;L/N-PE: 10KV L-N: 6KV)		
PF	>0.9		
THD	≤20%		
Waterproof Rating	WET (IP66)		
Explosion-proof Mark	North America: Class I ,Division 1,Groups C,D, T6; Class I ,Division 2,Groups A,B,C,D, T4		

Materials

LED Brand/ LED Type	Bridgelux / SMD3030 (1W)
LED QTY	112 PCS
Housing	Aluminum Alloy
Housing color	Any Colors
Cover	Clear Glass

Others

Operating Temperature	-40°C TO 60°C
Operating Humidity	10%-90% RH
Storage Temperature	-40°C TO 80°C
Storage Humidity	10%-95% RH
Application	Indoor/Outdoor
Safety Certification	UL/cUL
Warranty Time	5 Years

Light Distribution Testing Parameters

(3000K,7H6V)

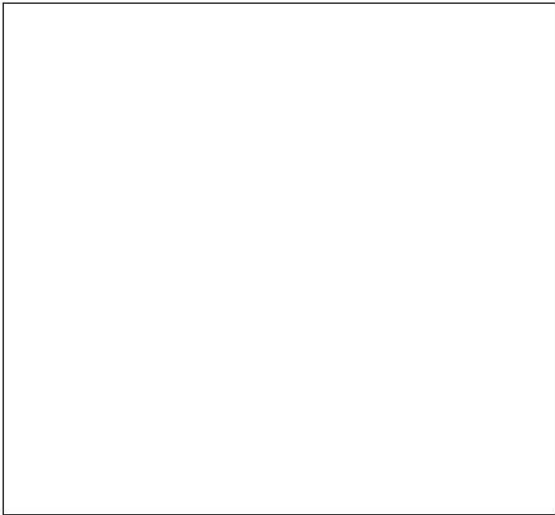
Luminaire Property

Luminaire Manufacturer:	Luminaire Description:
Luminaire Category:	Lamp Description:
Lamp Catalog:	Lumens per Lamp:
Number of Lamps:	Luminous Width (mm):
Luminous Length (mm):	Voltage: 120.0 V
Luminous Height (mm):	Power: 61.88 W
Current: 0.517 A	
Power Factor: 0.997	

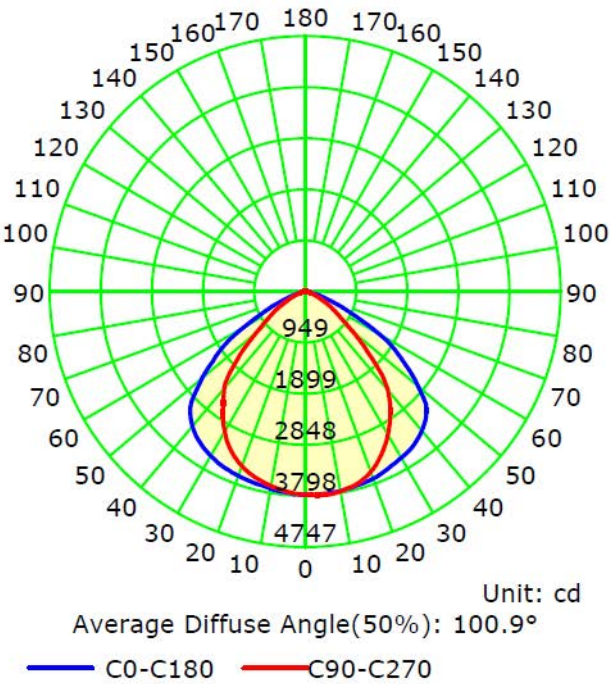
Photometric Results

IES Classification: Type I	Longitudinal Classification: Very Short
Total Rated Lamp Lumens: 9013.9 lm	Measurement Flux: 9013.9 lm
Efficiency: 100%	Downward Ratio: 99%
Upward Ratio: 1%	Luminaire Efficacy Rating (LER): 145.72
C0r0 Intensity: 3775.53 cd	Max. Intensity: 3798.27 cd
Pos of Max. Intensity: H90 V6	
Beam Angle(C0/C180,C90/C270,C45/C225,C135/315): 113.7, 88.2, 104.5, 103.9	

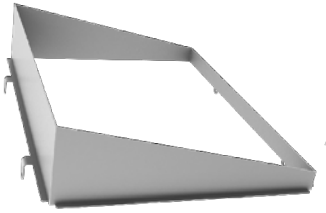
Picture Of Luminaire



Luminous Intensity Distribution Curve



Optional Accessory



Light shield



PM



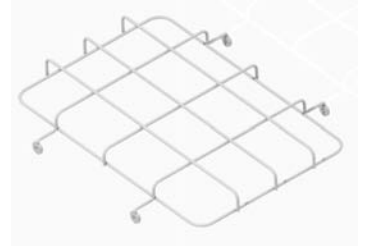
FM-shape buckle



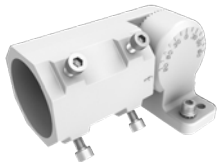
HM-Hchain mount



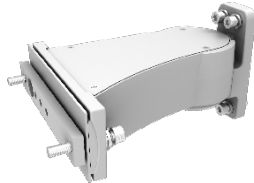
cable mount



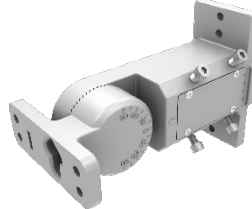
wire guard



AM



DM



A&D



RAM



CM

Package

		clear glass (with U-shape bracket or FM bracket)	
Lamps Net Weight		9.2kg	
Outer box	size	365×345×255mm	
	Qty/ Carton	1 PC	
	Weight/Carton	10.1kg	

Notice For User

- ◆ when installing the conduit, remove the compression nut on the screw thread of the lamp. Requirement of waterproof for fixture connection and requirement of conduit system connection should according to the local regulations.
- ◆ Please turn off power before install or change assembly parts.
- ◆ The input voltage and lamps should be matched, after connecting the power line, Please make sure the wiring section is insulated.
- ◆ No-professionals, must not install and disassemble the lamps.

Trouble Shootings

Troubles	Check points
Flickering of the light	Turn off the power and turn on again in 3 minutes. If same phenomena occur, then call agencies.
Out of working	Please check the connection.



NAME: Hazardous Location LED Flood Light

P/N: AL-EPLF01-100WXYZD1-abcd

Note:

- Where "X" stands for LED manufactory, can be J;
- Where "Y" stands for Diffuser type, can be "S2" to "S10", can be "T1" to "T5"; can be "5H5V" to "7H7V"; represents different Diffuser light angle and with flat clear glass, or "CG" represents flat clear glass only;
- Where "Z" can be "S" or blank, represents "with Wire Guard" or "without Wire Guard", can be "L" or blank, represents "Light shield";
- Where "a" can be any two letters to represent color of luminaire;
- Where "b" can be "FM", "U", "PM", "AM", "DM", "A&D", "RAM", "PM", "HM", represent bracket type;
- Where "c" can be "NPT" for 3/4" NPT threaded pipe wiring;
- Where "d" can be 27, 30, 40, 50, 57, 65 to represent CCT.

Advantage:

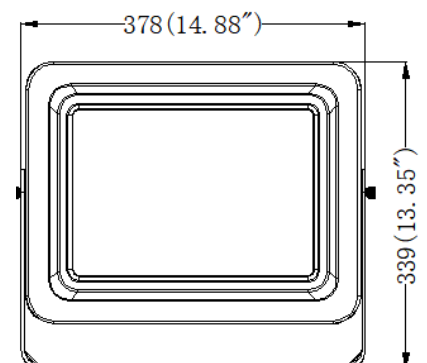
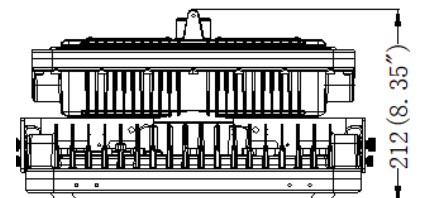
- IP66 driver, input voltage 120-277VAC.
- No UV or IR in the beam.
- Easy to install and operate.
- Energy saving, long lifespan.
- Light is soft and uniform, safe to eyes.
- Instant start, NO humming.
- Green and eco-friendly without mercury.

CERTIFICATIONS:

- CI D1 Groups C,D,T6;
- CI D2 Groups A,B,C,D,T4A.
- UL 844.
- UL 1598.
- UL 1598A.
- UL 8750.
- CSA C22.2 No.137.0.
- CSA C22.2 No.250.0.
- CSA C22.2 No.250.13.

Application:

- Warehouse, factory and workshops;
- Petroleum and petrochemical area, and gas station;
- Power, railway, ship port, public security, fire protection and other fields.



Product Specifications

Product name	Hazardous Location LED Flood Light
Part No	AL-EPLF01-100WXYZD1-abcd
Dimension	378×339×212 mm 14.88" × 13.35" × 8.35"

Technical Characteristic

Color temperature	3000K - 6500K		
CRI	>70		
Cover	clear glass	clear glass+7H6V lens	clear glass+ 23° lens
Lumen (Tolerance : ±10%)	16500LM	16200 LM	14000 LM
Lumen Efficacy (Tolerance:±10%@5000K)	165 LM/W	162 LM/W	140LM/W
Viewing Angle	140° ×120° (7H6V);23° (S2);T1-T5;5H5V-7H7V;S3-S9;110°		
Input Power	100W		
Input Voltage	120-277VAC 50/60Hz		
Driver Brand	China Brand Driver (SS-100VP-143BH;L/N-PE: 10KV L-N: 6KV)		
PF	>0.9		
THD	≤20%		
Waterproof Rating	WET (IP66)		
Explosion-proof Mark	North America: Class I ,Division 1,Groups C,D, T6; Class I ,Division 2,Groups A,B, C,D,T4A		

Materials

LED Brand/ LED Type	Bridgelux / SMD3030 (1W)
LED QTY	200 PCS
Housing	Aluminum Alloy
Housing color	Any Colors
Cover	Clear Glass

Others

Operating Temperature	-40°C TO 60°C
Operating Humidity	10%-90% RH
Storage Temperature	-40°C TO 80°C
Storage Humidity	10%-95% RH
Application	Indoor/Outdoor
Safety Certification	UL/cUL
Warranty Time	5 Years

Light Distribution Testing Parameters

(3000K,7H6V)

Luminaire Property

Luminaire Manufacturer:
Luminaire Category:
Lamp Catalog:
Number of Lamps:
Luminous Length (mm):
Luminous Height (mm):
Current: 0.862 A
Power Factor: 0.999

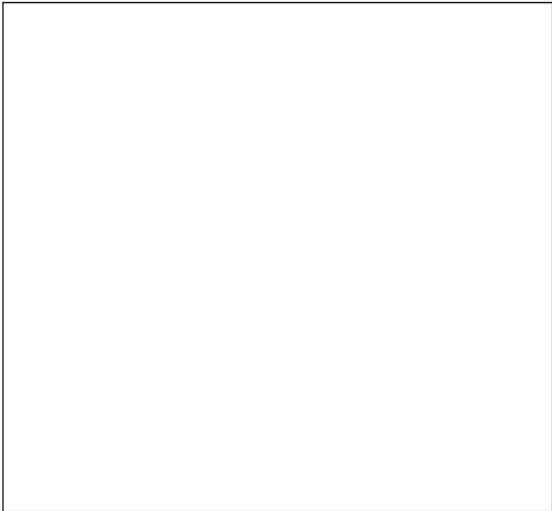
Luminaire Description:
Lamp Description:
Lumens per Lamp:
Luminous Width (mm):
Voltage: 120.0 V
Power: 103.37 W

Photometric Results

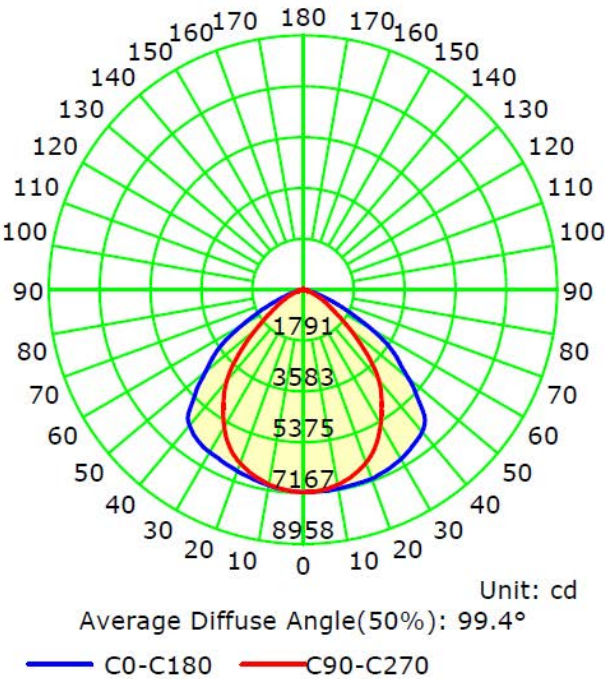
IES Classification: Type I
Total Rated Lamp Lumens: 16459.0 lm
Efficiency: 100%
Upward Ratio: 1%
C0r0 Intensity: 7127.01 cd
Pos of Max. Intensity: H337.5 V8
Beam Angle(C0/C180,C90/C270,C45/C225,C135/315): 112.4, 86.4, 101.4, 101.5

Longitudinal Classification: Very Short
Measurement Flux: 16459 lm
Downward Ratio: 99%
Luminaire Efficacy Rating (LER): 159.27
Max. Intensity: 7167.08 cd

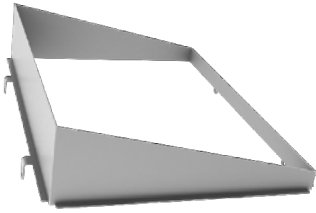
Picture Of Luminaire



Luminous Intensity Distribution Curve



Optional Accessory



Light shield



PM



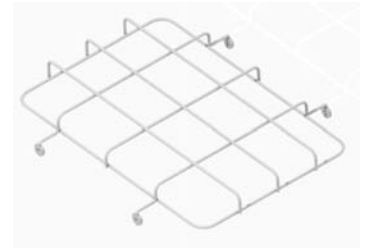
FM-shape buckle



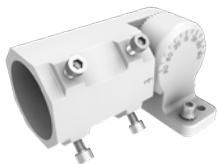
HM-Hchain mount



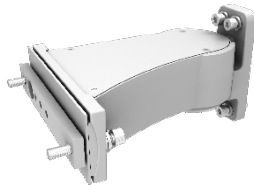
cable mount



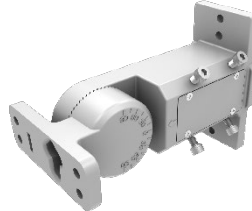
wire guard



AM



DM



A&D



RAM



CM

Package

		clear glass (with U-shape bracket or FM bracket)	
Lamps Net Weight		15.2kg	
Outer box	size	448×440×285mm	
	Qty/ Carton	1 PC	
	Weight/Carton	16.8kg	

Notice For User

- ◆ when installing the conduit, remove the compression nut on the screw thread of the lamp. Requirement of waterproof for fixture connection and requirement of conduit system connection should according to the local regulations.
- ◆ Please turn off power before install or change assembly parts.
- ◆ The input voltage and lamps should be matched, after connecting the power line, Please make sure the wiring section is insulated.
- ◆ No-professionals, must not install and disassemble the lamps.

Trouble Shootings

Troubles	Check points
Flickering of the light	Turn off the power and turn on again in 3 minutes. If same phenomena occur, then call agencies.
Out of working	Please check the connection.



NAME: Hazardous Location LED Flood Light

P/N: AL-EPLF01-150WXYZD1-abcd

Note:

- Where "X" stands for LED manufactory, can be J;
- Where "Y" stands for Diffuser type, can be "S2" to "S10", can be "T1" to "T5"; can be "5H5V" to "7H7V"; represents different Diffuser light angle and with flat clear glass, or "CG" represents flat clear glass only;
- Where "Z" can be "S" or blank, represents "with Wire Guard" or "without Wire Guard", can be "L" or blank, represents "Light shield";
- Where "a" can be any two letters to represent color of luminaire;
- Where "b" can be "FM", "U", "PM", "AM", "DM", "A&D", "RAM", "PM", "HM", represent bracket type;
- Where "c" can be "NPT" for 3/4" NPT threaded pipe wiring;
- Where "d" can be 27, 30, 40, 50, 57, 65 to represent CCT.

Advantage:

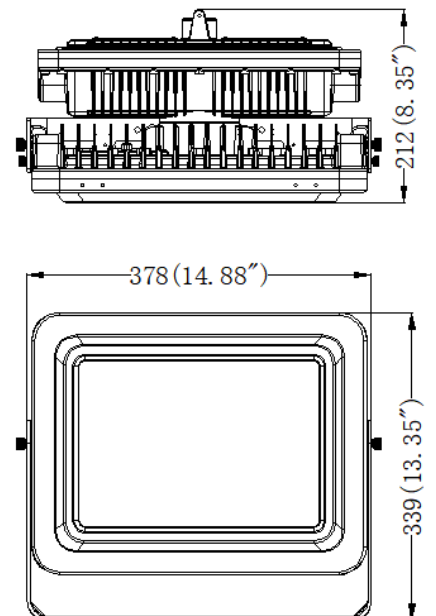
- IP66 driver, input voltage 120-277VAC.
- No UV or IR in the beam.
- Easy to install and operate.
- Energy saving, long lifespan.
- Light is soft and uniform, safe to eyes.
- Instant start, NO humming.
- Green and eco-friendly without mercury.

Application:

- Warehouse, factory and workshops;
- Petroleum and petrochemical area, and gas station;
- Power, railway, ship port, public security, fire protection and other fields.

CERTIFICATIONS:

- CI D1 Groups C,D,T6;
- CI D2 Groups A,B,C,D,T4A.
- UL 844.
- UL 1598.
- UL 1598A.
- UL 8750.
- CSA C22.2 No.137.0.
- CSA C22.2 No.250.0.
- CSA C22.2 No.250.13.



Product Specifications

Product name	Hazardous Location LED Flood Light
Part No	AL-EPLF01-150WXYZD1-abcd
Dimension	378×339×212 mm 14.88" × 13.35" × 8.35"

Technical Characteristic

Color temperature	3000K - 6500K		
CRI	>70		
Cover	clear glass	clear glass+7H6V lens	clear glass+ 23° lens
Lumen (Tolerance : ±10%)	24300LM	24000 LM	21000 LM
Lumen Efficacy (Tolerance:±10%@5000K)	162 LM/W	160 LM/W	140LM/W
Viewing Angle	140° ×120° (7H6V);23° (S2);T1-T5;5H5V-7H7V;S3-S9;110°		
Input Power	150W		
Input Voltage	120-277VAC 50/60Hz		
Driver Brand	China Brand Driver (SS-150VP-56BH;L/N-PE: 10KV L-N: 6KV)		
PF	>0.9		
THD	≤20%		
Waterproof Rating	WET (IP66)		
Explosion-proof Mark	North America: Class I ,Division 1,Groups C,D,T6; Class I ,Division 2,Groups A,B,C,D,T4A		

Materials

LED Brand/ LED Type	Bridgelux / SMD3030 (1W)
LED QTY	324 PCS
Housing	Aluminum Alloy
Housing color	Any Colors
Cover	Clear Glass

Others

Operating Temperature	-40℃ TO 55℃
Operating Humidity	10%-90% RH
Storage Temperature	-40℃ TO 80℃
Storage Humidity	10%-95% RH
Application	Indoor/Outdoor
Safety Certification	UL/cUL
Warranty Time	5 Years

Light Distribution Testing Parameters

(3000K,7H6V)

Luminaire Property

Luminaire Manufacturer:
Luminaire Category:
Lamp Catalog:
Number of Lamps:
Luminous Length (mm):
Luminous Height (mm):
Current: 1.290 A
Power Factor: 0.998

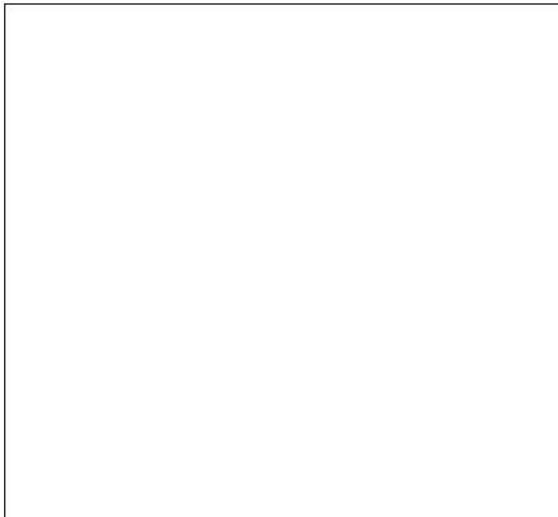
Luminaire Description:
Lamp Description:
Lumens per Lamp:
Luminous Width (mm):
Voltage: 120.0 V
Power: 154.51 W

Photometric Results

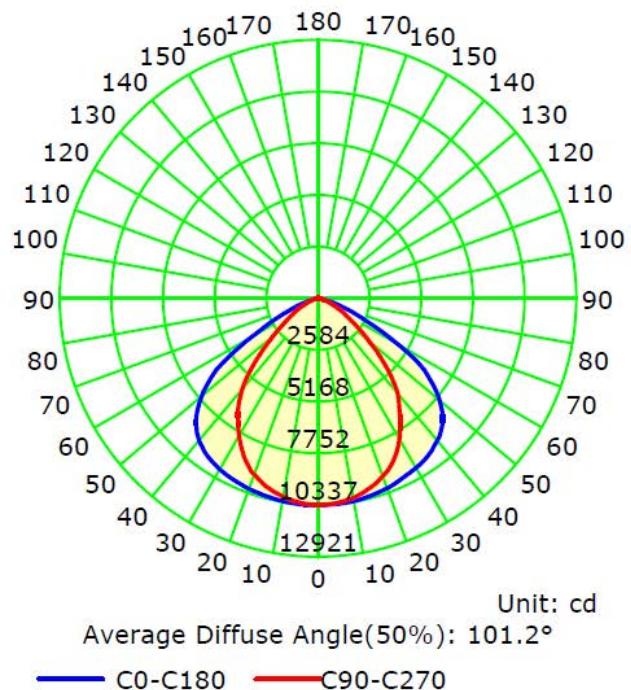
IES Classification: Type I
Total Rated Lamp Lumens: 24279.3 lm
Efficiency: 100%
Upward Ratio: 0%
C0r0 Intensity: 10332.62 cd
Pos of Max. Intensity: H0 V1
Beam Angle(C0/C180,C90/C270,C45/C225,C135/315): 116.1, 86.3, 101.9, 101.7

Longitudinal Classification: Very Short
Measurement Flux: 24279.3 lm
Downward Ratio: 100%
Luminaire Efficacy Rating (LER): 157.19
Max. Intensity: 10337.07 cd

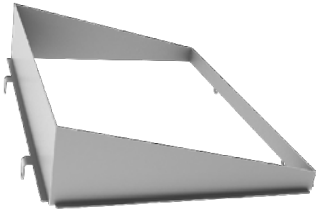
Picture Of Luminaire



Luminous Intensity Distribution Curve



Optional Accessory



Light shield



PM



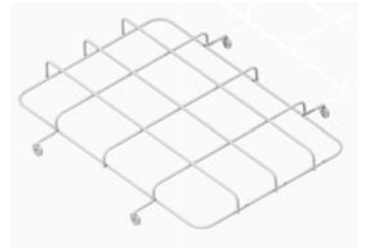
FM-shape buckle



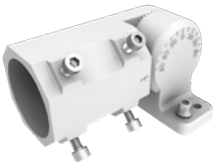
HM-Hchain mount



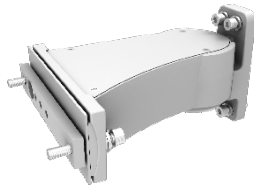
cable mount



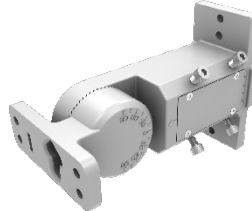
wire guard



AM



DM



A&D



RAM



CM

Package

		clear glass (with U-shape bracket or FM bracket)	
Lamps Net Weight		15.5kg	
Outer box	size	448×440×285mm	
	Qty/ Carton	1 PC	
	Weight/Carton	17.1kg	

Notice For User

- ◆ when installing the conduit, remove the compression nut on the screw thread of the lamp. Requirement of waterproof for fixture connection and requirement of conduit system connection should according to the local regulations.
- ◆ Please turn off power before install or change assembly parts.
- ◆ The input voltage and lamps should be matched, after connecting the power line, Please make sure the wiring section is insulated.
- ◆ No-professionals, must not install and disassemble the lamps.

Trouble Shootings

Troubles	Check points
Flickering of the light	Turn off the power and turn on again in 3 minutes. If same phenomena occur, then call agencies.
Out of working	Please check the connection.



NAME: Hazardous Location LED Flood Light

P/N: AL-EPLF01-200WXYZD1-abcde

Note:

- 1、Where "X" stands for LED manufactory, can be J;
- 2、Where "Y" stands for Diffuser type, can be "S2" to "S10", can be "T1" to "T5"; can be "5H5V" to "7H7V"; represents different Diffuser light angle and with flat clear glass, or "CG" represents flat clear glass only;
- 3、Where "Z" can be "S" or blank, represents "with Wire Guard" or "without Wire Guard", can be "L" or blank, represents "Light shield";
- 4、Where "a" can be any two letters to represent color of luminaire;
- 5、Where "b" can be "FM", "U", "PM", "AM", "DM", "A&D", "RAM", "PM", "HM", represent bracket type;
- 6、Where "c" can be "NPT" for 3/4" NPT threaded pipe wiring;
- 7、Where "d" can be 27, 30, 40, 50, 57, 65 to represent CCT, can be "T", stand for CCT adjustable;
- 8、"e" can be "W" or blank for Power Control provided or not.

Advantage:

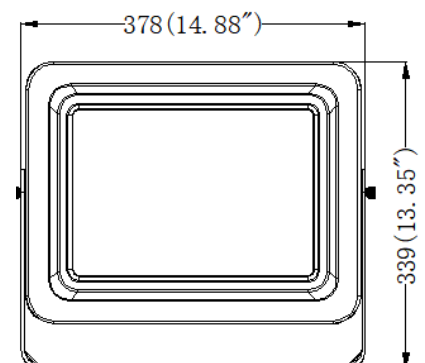
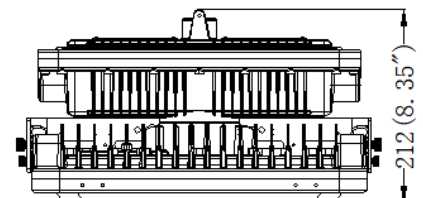
- IP66 driver, input voltage 120-277VAC.
- No UV or IR in the beam.
- Easy to install and operate.
- Energy saving, long lifespan.
- Light is soft and uniform, safe to eyes.
- Instant start, NO humming.
- Green and eco-friendly without mercury.

Application:

- Warehouse, factory and workshops;
- Petroleum and petrochemical area, and gas station;
- Power, railway, ship port, public security, fire protection and other fields.

CERTIFICATIONS:

- CI D1 Groups C, D, T5;
- CI D2 Groups A, B, C, D, T4.
- UL 844.
- UL 1598.
- UL 1598A.
- UL 8750.
- CSA C22.2 No.137.0.
- CSA C22.2 No.250.0.
- CSA C22.2 No.250.10.



Product Specifications

Product name	Hazardous Location LED Flood Light
Part No	AL-EPLF01-200WXYZD1-abcde
Dimension	378×339×212 mm 14.88" × 13.35" × 8.35"

Technical Characteristic

Color temperature	3000K - 6500K		
CRI	>70		
Cover	clear glass	clear glass+7H6V lens	clear glass+ 23° lens
Lumen (Tolerance : ±10%)	31400LM	31000 LM	27200 LM
Lumen Efficacy (Tolerance:±10%@5000K)	157 LM/W	155 LM/W	136LM/W
Viewing Angle	140° ×120° (7H6V);23° (S2);T1-T5;5H5V-7H7V;S3-S9;110°		
Input Power	200W		
Input Voltage	120-277VAC 50/60Hz		
Driver Brand	China Brand Driver (SS-200VP-56BH;L/N-PE: 10KV L-N: 6KV)		
PF	>0.9		
THD	≤20%		
Waterproof Rating	WET (IP66)		
Explosion-proof Mark	North America: Class I ,Division 1,Groups C,D,T5; Class I ,Division 2,Groups A,B,C,D,T4		

Materials

LED Brand/ LED Type	Bridgelux / SMD3030 (1W)
LED QTY	312 PCS
Housing	Aluminum Alloy
Housing color	Any Colors
Cover	Clear Glass

Others

Operating Temperature	-40℃ TO 55℃
Operating Humidity	10%-90% RH
Storage Temperature	-40℃ TO 80℃
Storage Humidity	10%-95% RH
Application	Indoor/Outdoor
Safety Certification	UL/cUL
Warranty Time	5 Years

Light Distribution Testing Parameters

(3000K,7H6V)

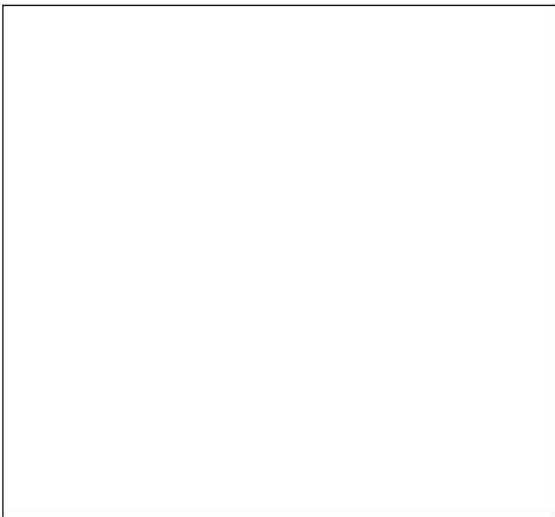
Luminaire Property

Luminaire Manufacturer:	Luminaire Description:
Luminaire Category:	Lamp Description:
Lamp Catalog:	Lumens per Lamp:
Number of Lamps:	Luminous Width (mm):
Luminous Length (mm):	Voltage: 120.0 V
Luminous Height (mm):	Power: 201.20 W
Current: 1.680 A	
Power Factor: 0.998	

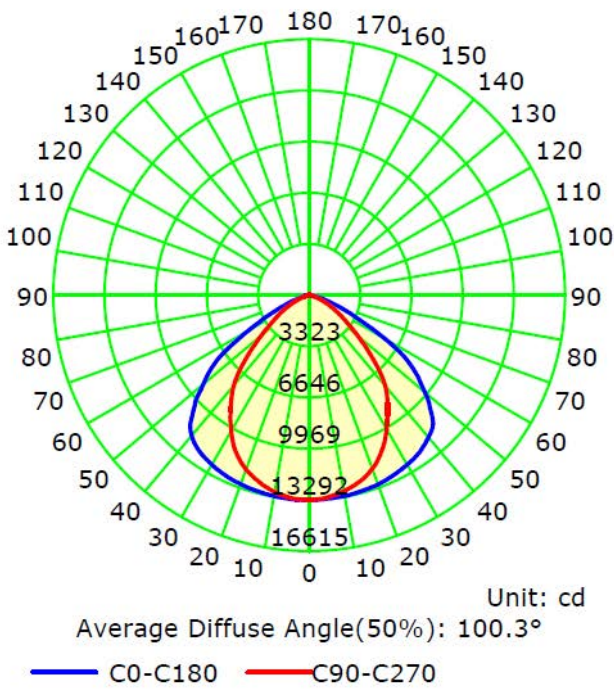
Photometric Results

IES Classification: Type I	Longitudinal Classification: Very Short
Total Rated Lamp Lumens: 30753.8 lm	Measurement Flux: 30753.8 lm
Efficiency: 100%	Downward Ratio: 100%
Upward Ratio: 0%	Luminaire Efficacy Rating (LER): 152.90
C0r0 Intensity: 13282.27 cd	Max. Intensity: 13292.6 cd
Pos of Max. Intensity: H180 V4	
Beam Angle(C0/C180,C90/C270,C45/C225,C135/315): 114.7, 85.9, 101.6, 100.2	

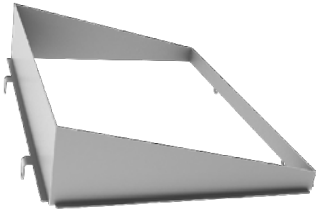
Picture Of Luminaire



Luminous Intensity Distribution Curve



Optional Accessory



Light shield



PM



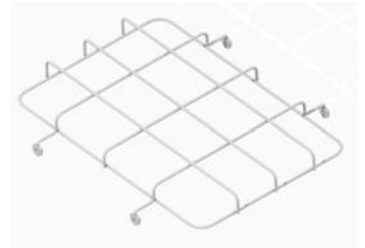
FM-shape buckle



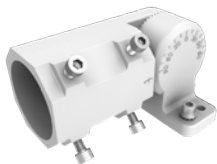
HM-Hchain mount



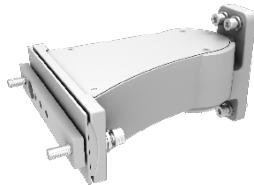
cable mount



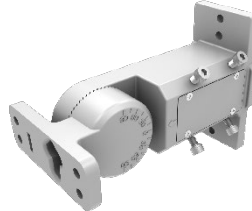
wire guard



AM



DM



A&D



RAM



CM

Package

		clear glass (with U-shape bracket or FM bracket)	
Lamps Net Weight		15.7kg	
Outer box	size	448×440×285mm	
	Qty/ Carton	1 PC	
	Weight/Carton	17.3kg	

Notice For User

- ◆ when installing the conduit, remove the compression nut on the screw thread of the lamp. Requirement of waterproof for fixture connection and requirement of conduit system connection should according to the local regulations.
- ◆ Please turn off power before install or change assembly parts.
- ◆ The input voltage and lamps should be matched, after connecting the power line, Please make sure the wiring section is insulated.
- ◆ No-professionals, must not install and disassemble the lamps.

Trouble Shootings

Troubles	Check points
Flickering of the light	Turn off the power and turn on again in 3 minutes. If same phenomena occur, then call agencies.
Out of working	Please check the connection.