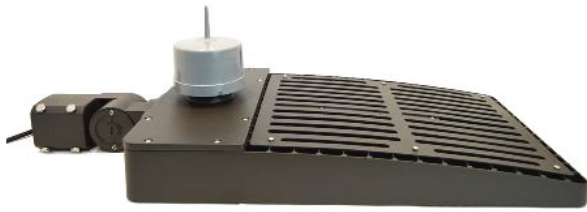


# 3-in-1 Wireless Controller & System



Wireless Controller



Wireless Controller Lite



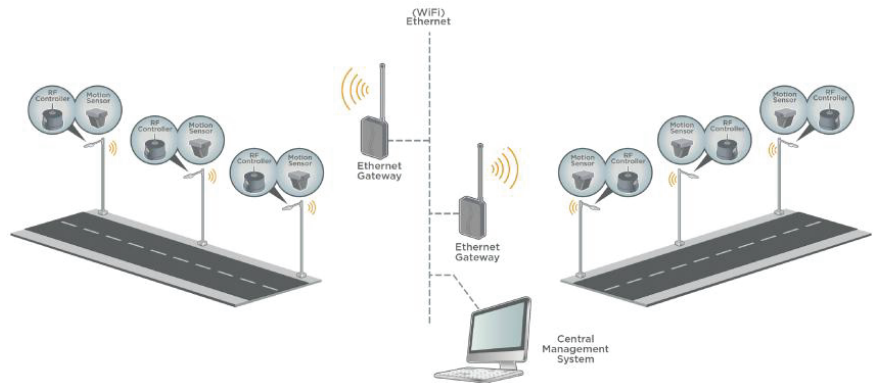
Microwave Sensor

## Ethernet Gateway

- **Network Type:** Star-mesh repeater
- **Range:** 3 km line of sight
- **Standard:** IEEE 802.15.4
- **Frequency:** 902-928MHz
- **Power:** +24 dBm
- **Number of controllers supported:** 2,000
- **Connection:** 3G Cellular or 10/100 Ethernet
- **Temperature:** -22 to 158 °F
- **Input voltage:** 120V (transformer needed for 277V)
- Cellular carrier certified
- IP66 rated
- FCC and IC compliant
- 5-year limited warranty

## Microwave Sensor

- **Detecting range:**
  - Pedestrian: 100'
  - Small vehicle: 165'
  - Truck: 400'
- Connection to TOP900 wireless controller
- Bi-level timeout, tri-level timeout
- IP65
- **Power:** +24 dBm
- **Temperature:** -22 to 158 °F
- **Size:** 3.5"x3.5"x3.5"
- FCC approved, UL listed
- 5-year limited warranty



## Ordering Information

Product #	Product Description
TOP900TLX	Wireless Controller
TOP900TLX-E	Wireless Controller Lite
MWX-LVE-180U	Microwave Sensor
LumeWave Gateway 2.0	Ethernet Gateway
Luminsight Desktop Central Management Software	Lighting Management System

## TOP900LTX/E Wireless Controller

- **3-in-1 wireless controller:**
  - Wireless on-off and dimming (0-10V)
  - Integrated Photo-cell
  - Centralized lighting management
- **Input voltage:** 110-277V (480V optional)
- Motion sensor (optional)
- Secure AES 128-bit encryption
- **Wireless standard:**
  - IEEE 802.15.4
  - Frequency: 902-928MHz
  - Range: 1 mile
- IP66
- FCC approved, UL 916/773 listed, RoHS compliant
- Title 24 compliant
- 5-year limited warranty